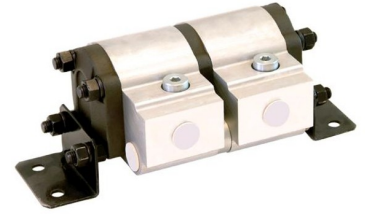


### Features

- Equally divides input flow to output ports
- Two to twelve flow dividers can be combined
- Built in relief valves
- Two frame sizes, 1.6-8.42cc/rev and 11-31cc/rev.
- Extruded Aluminum Body



1.6-8.42cc/rev.



11-31 cc/rev.

### Ordering Details

F	Fixed				
FD	Flow Divider				
1-	CC per section, Centimeters <sup>3</sup> /rev.: 1=1.6, 2=2.13, 3=3.18, 4=4.24, 5=5.29, 6=6.36, 7=7.42, 8=8.42, 11, 14, 17, 25, 31				
O06	Pressure/Outlet Port:	Threaded, SAE O-ring boss			
		Code	Dash Size	Thread	
	Inlet Port:	CC/Rev.			
		Inlet	Outlet		
		O06	-6	9/16-18	1, 2, 3, 4, 5
		O08	-8	3/4-16	1, 2, 3, 4, 5 6, 7, 8
		O16	-16	1 5/16-12 6, 7, 8	
		Threaded, NPT			
		Code	Nominal Size	CC/Rev.	
		Inlet	Outlet		
		N.375	3/8"	1, 2, 3, 4, 5	
		N.5	1/2"	1, 2, 3, 4, 5 6, 7, 8	
		N1	1"	6, 7, 8	
4-	Quantity of Sections, 2-12				
15	Series				

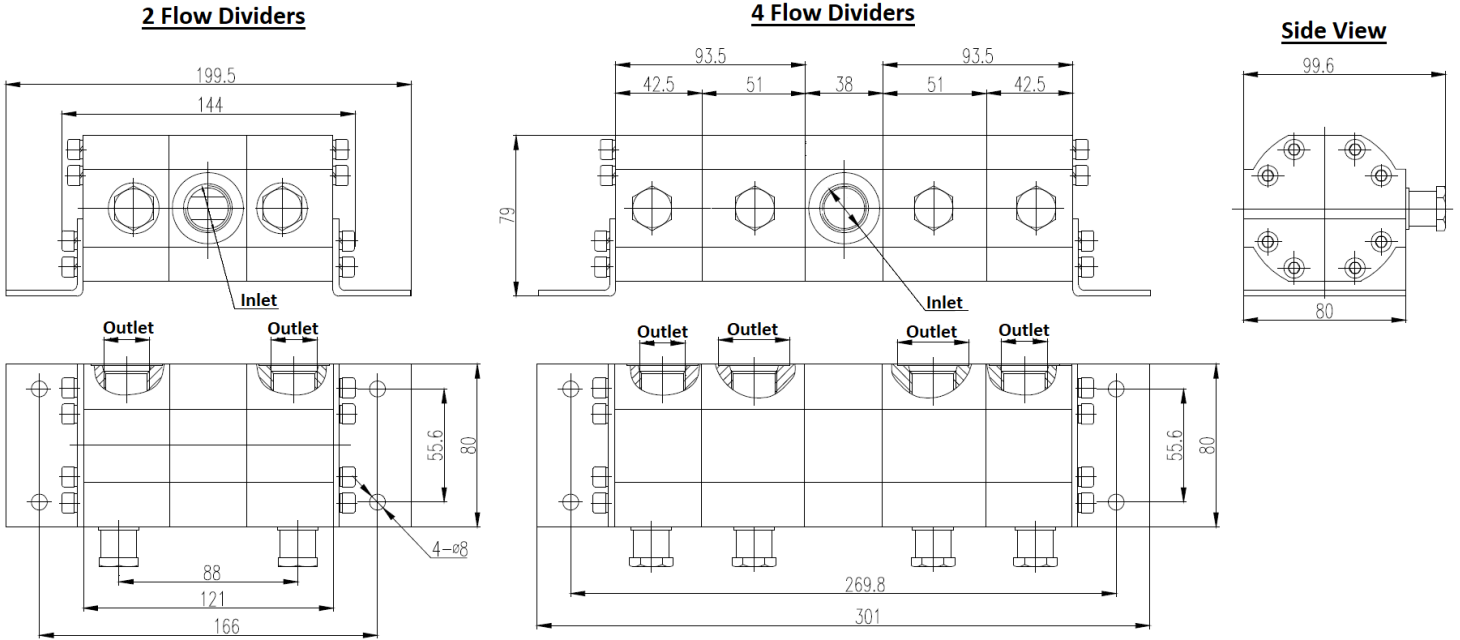
Example Part Number: FFD1-O06O08-4-15

**Section 1 – Technical Data and Dimensional Data, 1-8cc/rev.**

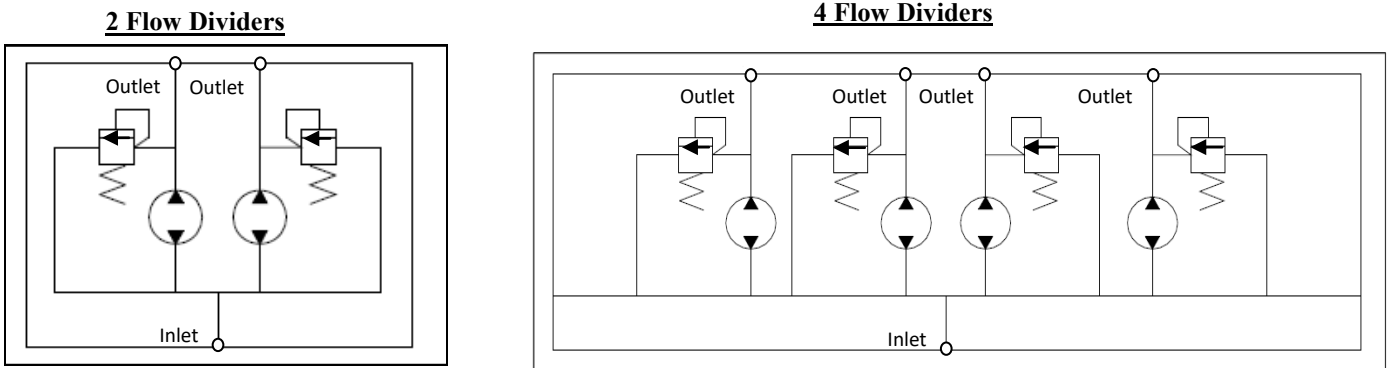
Displacement		Ports, SAE (NPT)		Min. Flow		Max. Flow		Max. Continuous Pressure Drop		Max. Outlet Pressure		Flow Accuracy at 16-19bar (232-276PSI) pressure drop*
cc/rev.	in <sup>3</sup> /rev.	Inlet	Outlet	GPM	LPM	GPM	LPM	PSI	Bar	PSI	Bar	
1.6	0.097	-8 (1/2")	-6 (3/8")	0.8	3.0	1.7	6.4	1800	124	3500	240	+/-1.5% to +/-2%
2.13	0.129	-8 (1/2")	-6 (3/8")	1.2	4.5	2.5	9.5	1800	124	3500	240	
3.18	0.194	-8 (1/2")	-6 (3/8")	1.7	6.4	4.5	13.2	1800	124	3500	240	
4.24	0.258	-8 (1/2")	-6 (3/8")	2.5	9.5	5	18.9	1800	124	3500	240	
5.29	0.323	-8 (1/2")	-6 (3/8")	3.0	11.4	6.0	22.7	1800	124	3500	240	
6.36	0.388	-16 (1")	-8 (1/2")	3.5	13.2	7.0	26.5	1600	110	3500	240	
7.42	0.453	-16 (1")	-8(1/2")	4.0	15.1	8.0	30.3	1300	90	3500	240	
8.42	0.517	-16 (1")	-8 (1/2")	4.5	17.0	9.0	34.1	1200	83	3500	240	

\*Accuracy can fluctuate depending on fluid viscosity, load and pressure.

**Dimensions**



**Schematic:**



**Section 1 – Technical Data and Dimensional Data, 11-31cc/rev.**

Displacement		Ports, SAE (NPT)			Min. Flow		Max. Flow		Max. Continuous Pressure Drop		Max. Outlet Pressure		Flow Accuracy at 11-14bar (160-203PSI) pressure drop*
cc/ rev.	in <sup>3</sup> / rev.	Inlet	Outlet	Drain	GPM	LPM	GPM	LPM	PSI	Bar	PSI	Bar	
11	0.671	-16 (1")	-8 (1/2")	-8 (1/2")	1.5-6.6	5.5-25	7.1	27	3142	220	3571	250	+/-1.5% to +/-2%
14	0.854	-16 (1")	-8(1/2")	-8(1/2")	1.8-8.4	7.0-32	9.0	34	2857	200	3142	220	
17	1.037	-16 (1")	-8 (1/2")	-8 (1/2")	2.2-9.0	8.5-34	9.8	37	2857	200	3142	220	
25	1.525	-16 (1")	-8 (1/2")	-8 (1/2")	3.1-12.6	12-48	14	53	2857	200	3142	220	
31	1.891	-16 (1")	-8(1/2")	-8(1/2")	3.7-15.7	14-60	18.5	70	2286	160	2541	180	

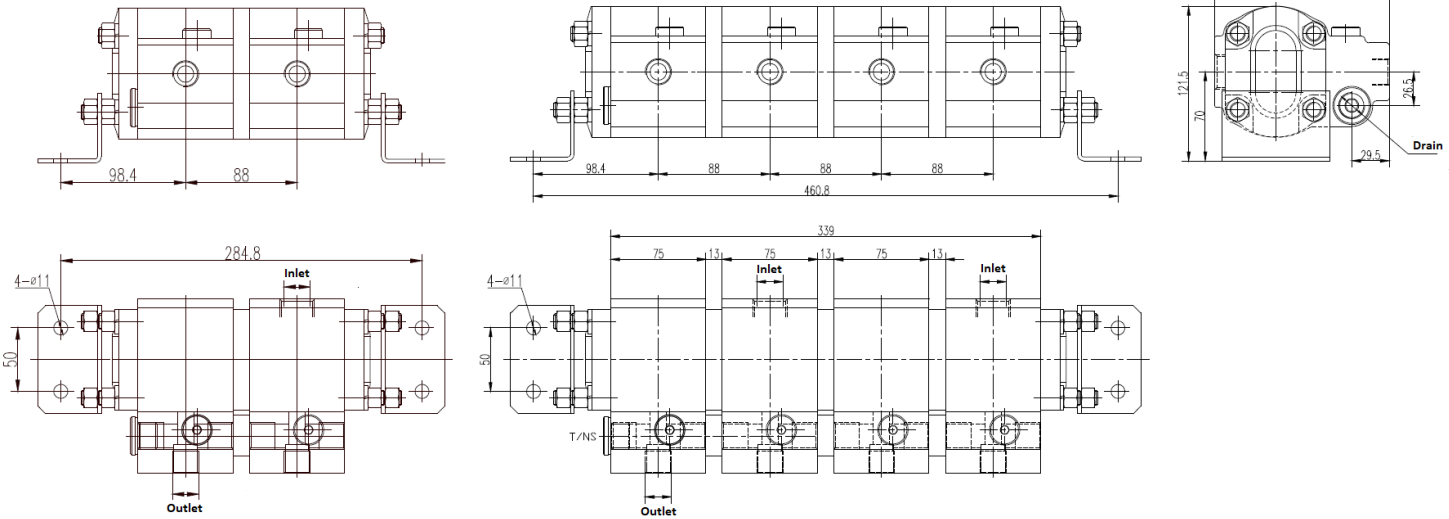
\*Accuracy can fluctuate depending on fluid viscosity, load and pressure.

**Dimensions**

**2 Flow Dividers**

**4 Flow Dividers**

**Side View**



**Schematic:**

**2 Flow Dividers**

**4 Flow Dividers**

